

WC102122

WELLINGTON DOUBLE DOOR BI-VIEW CABINET



MATERIAL

Carcass: Mild Steel
Door: Mild Steel and Mirrored Glass
Pin Handle: Chrome plated zinc
Shelf: Mild Steel

FINISH / COLOUR

White Powder Coated.

WEIGHT

11.3kg

PACKAGING

White box with colour label

FREQUENTLY USED APPLICATIONS

Commercial Washrooms
Hotels
Domestic Dwellings

FEATURES

White steel cabinet with bevelled mirrored doors.
Optional door pin handles.
Two adjustable steel shelves.
110° degree sprung hinges.
Supplied fully assembled for ease of installation.
Easy to install Hang 'n' Lock system.
All fixtures and fittings included.

PERFORMANCE STANDARDS

Meets Performance Requirements Of Service Condition 2.
BS EN ISO 9221:2017 - Corrosion Resistant (NSS 48hr Salt Spray, Min. Grade9).

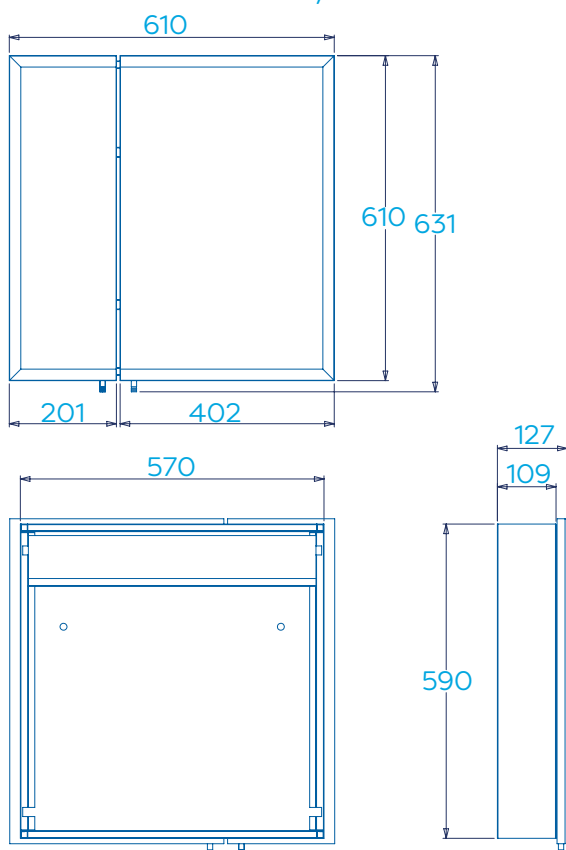
CARE AND MAINTENANCE

Clean surfaces with a damp cloth and wipe dry using a soft cloth.
Do not use chemical or abrasive cleaners as these may damage the surface finish.

GUARANTEE

Consumer Statutory Rights Apply

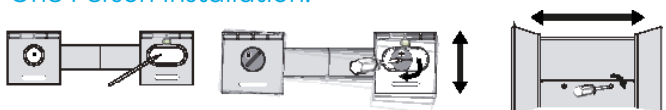
Dimensions for reference only



Dimensions: (H610mm x W610mm x D127mm)

HANG 'N' LOCK

Easy Installation Bracket.
Fully Adjustable.
One Person Installation.



Tel: +44 (0) 1264 365881
Fax: +44 (0) 1264 356437
Email: info@croydex.co.uk
Web: www.croydex.com

Printed material, designs and packaging are protected by copyright and design right.

Date Created:21/01/22 | REV 001